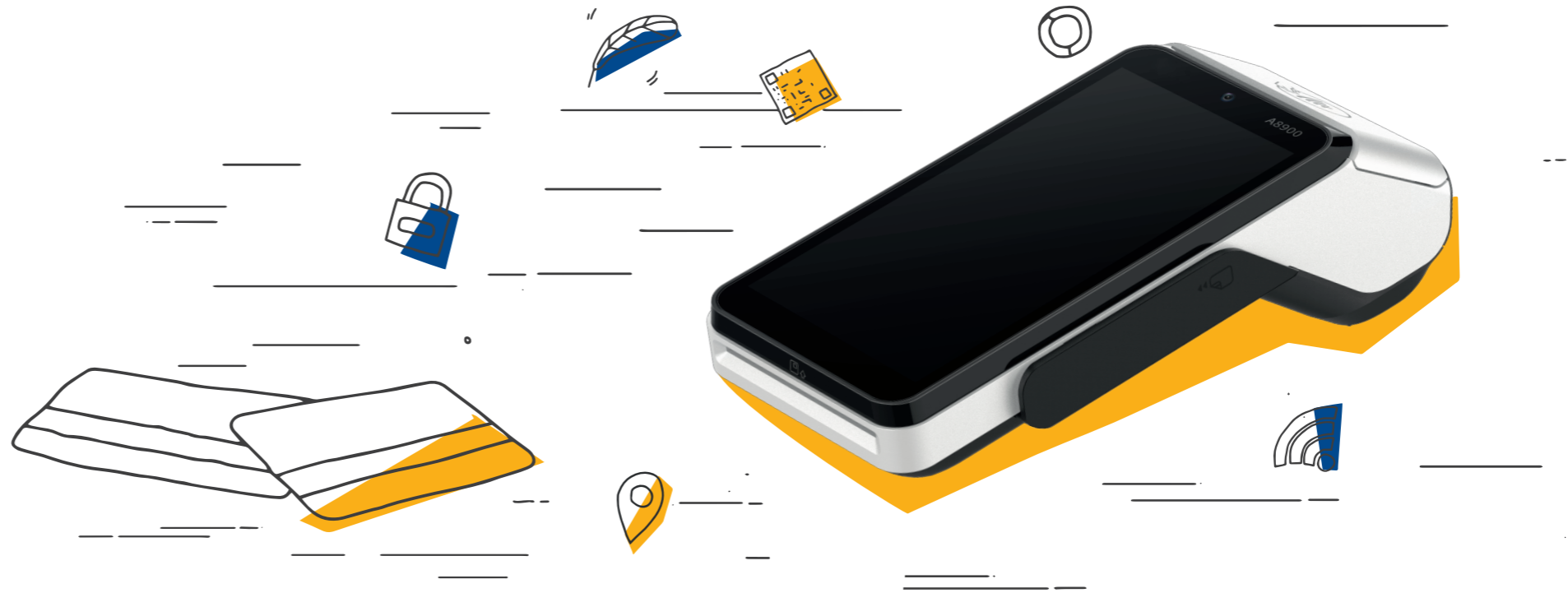


TOSAN TECHNO  
Smart Innovation



TOSAN TECHNO  
Smart Innovation

# TECHNO A8900 T5

TECHNO A8900 T5 is a smart electronic payment terminal providing merchants with smart Android applications, alongside fast and secure payment.

This terminal creates a user-friendly experience

for merchants and customers, using the keypad combined with a touch screen.

Most POS terminal applications are supported on this device and can be used to manage a business more efficiently.

The TECHNO A8900 T5 smart electronic payment terminal is suitable for:



Various applications in retail stores,



Delivery services,



Chain stores,



Restaurants and cafes,



Parking lots.



# SPECIFICATIONS

<b>OS</b>	Android 12
<b>Processor</b>	Quad-Core Cortex-A53, 2.0GHz
<b>Memory</b>	8GB eMMC Flash + 1GB DDR RAM
<b>Card Reader</b>	Chip & PIN   NFC Contactless   Magnetic Strip
<b>Scanner</b>	2MP Rear-Facing Camera (Read 1D/2D Codes)
<b>Display</b>	5.5" 720x1440 Pixels + Capacitive Touch Screen
<b>Communication</b>	4G (LTE) + Wi-Fi + Bluetooth
<b>Battery</b>	5100 mAh Li-ion Battery   3.6 V
<b>Printer</b>	2-inch Thermal Printer   Paper Roll Outer Diameter: 40mm
<b>Card Slot</b>	2 x SIM + 1 x SAM
<b>Navigation</b>	GPS   AGPS   GLONASS   BEIDOU
<b>Keys</b>	Power button, 2 x Volume
<b>Audio</b>	1 x Speaker   1 x Microphone
<b>Ports</b>	1 x Type-C USB
<b>Physical Characteristics</b>	L x W x H (mm): 185 x 79 x 58 mm
<b>Environmental</b>	0°C ~ 45°C (32°F ~ 113°F) Operating Temperature, Non-Charging -20°C ~ 70°C (-4°F ~ 158°F) Storage Temperature 5% ~ 96% Relative Humidity, Non-Condensing
<b>Certification</b>	PCI PTS 6.x SRED   EMVCo L1 & L2   EMV Contactless L1   CE   Visa pay-Wave   MasterCard Paypass   Amex ExpressPay   Discover D-PAS   TQM   RoHS   BQB   ABES   QUICK PASS   Anatel   Interac Flash   JCB/Speedy