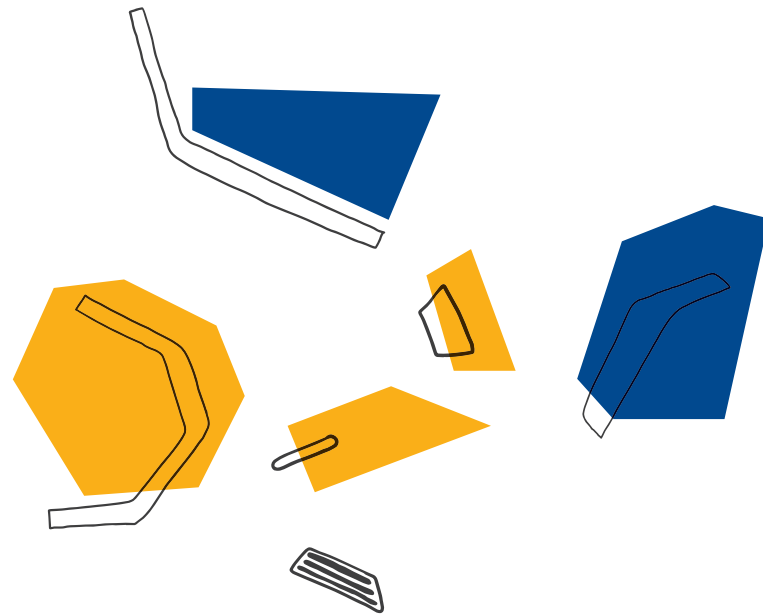


TOSAN TECHNO
Smart Innovation



TOSAN TECHNO
Smart Innovation



SMART ELECTRONIC PAYMENT TERMINAL | TECHNO D300

TECHNO D300

The TECHNO D300 is a smart electronic payment terminal that provides fast and secure payment processing.

It is a smart sales terminal family member developed

by TOSAN TECHNO. The terminal ensures high-speed and secure payment transactions and is equipped with suitable hardware for optimal performance.

The TECHNO D300 smart electronic payment terminal is suitable for:



Various applications in retail stores,



Delivery services,



Chain stores,



Restaurants and cafes,



Public parking lots.



SPECIFICATIONS

OS	Android 11
Processor	Quad-Core Cortex-A53, 2GHz
Memory	1GB RAM + 8GB Flash Extended Micro-SD slot
Card Reader	Chip & PIN NFC Contactless Magnetic Stripe
Scanner	2 MP Camera with Flash Light (Reads 1D/2D Codes)
Display	2.8" Full Color Touch Display (WVGA 320 x 240)
Communication	4G (LTE) Wi-Fi 2.4 & 5 GHz Bluetooth 5
Battery	5000 mAh 3.8 V
Printer	2-inch Thermal Printer Paper Roll Outer Diameter: 40mm Paper Width: 58mm
Card Slot	1 x Micro-SIM + 1 x Mini-SIM + 1 Mini-SAM
Navigation	GPS A-GPS GLONASS
Keys	1 x ON/OFF 15 x Alphanumeric With Backlight
Audio	1 x Speaker 1 x Headphone
Ports	1 x Type-C USB 1 x Audio Jack
Certification	PCI PTS 6.x SRED EMV L1 & L2 EMV Contactless L1 Visa payWave MasterCard Paypass Amex ExpressPay Discover D-PAS FCC CE MasterCard TQM