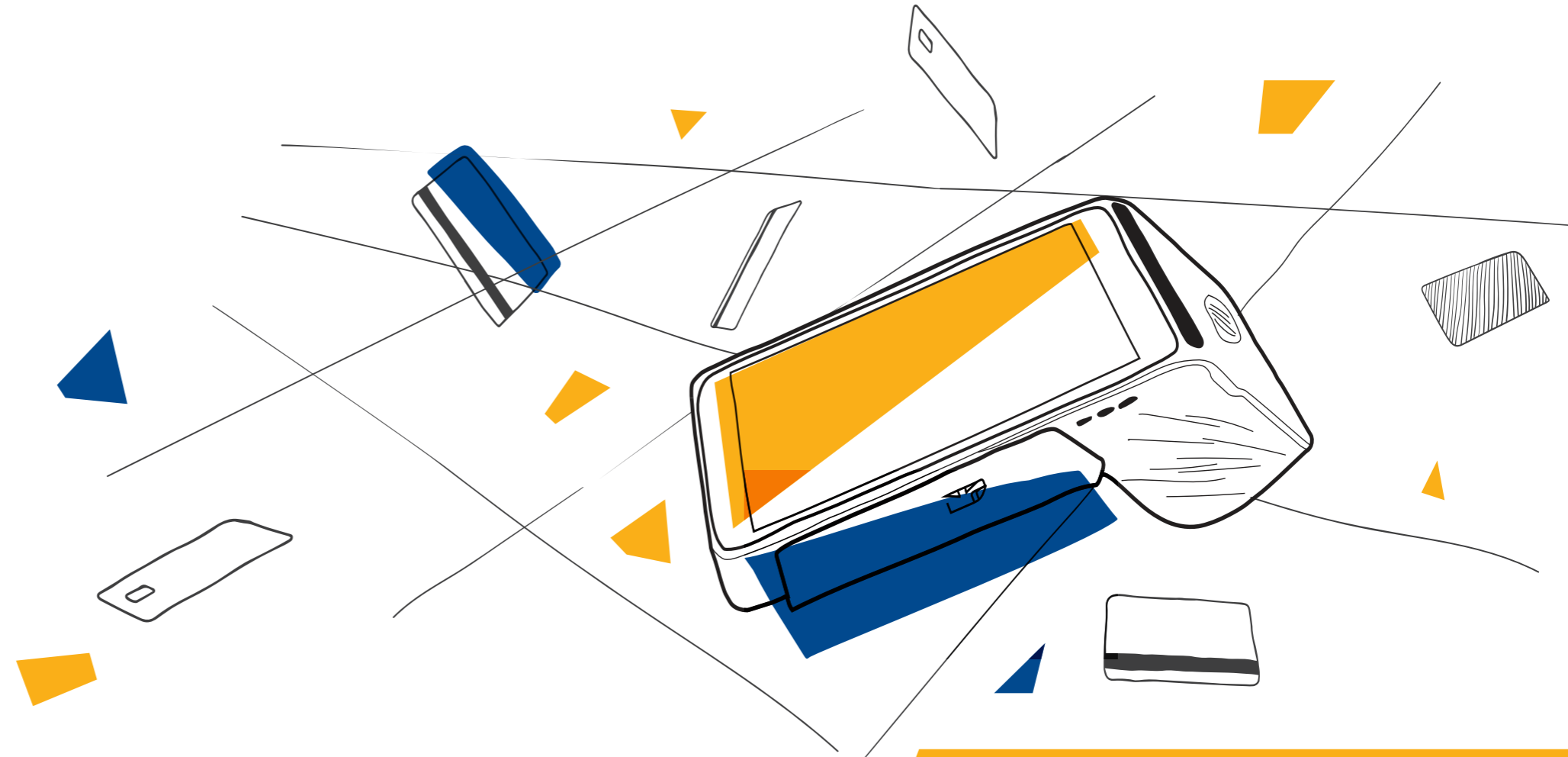
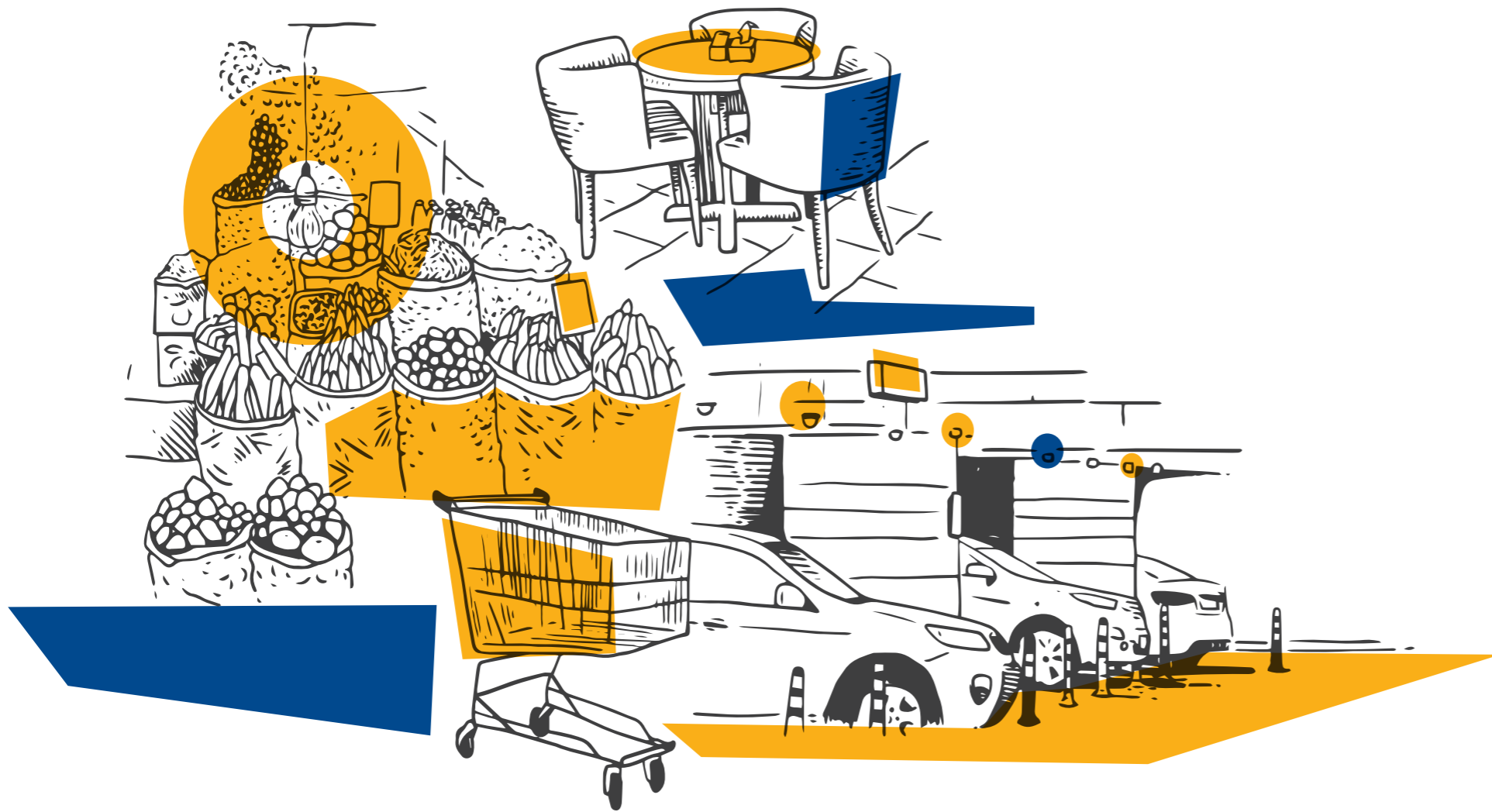


TOSAN TECHNO
Smart Innovation



TOSAN TECHNO
Smart Innovation





TECHNO P14 smart electronic payment terminal is suitable for:



Various applications in retail stores,



Delivery services,



Chain stores,



Restaurants and cafes,



Parking lots.

Specifications



TECHSTORE Enabled



High-performance quad-core Processor



PCI PTS 6.x Security Standard



Rear Facing Camera Capable of reading 1D/2D Barcodes



Multiple connectivity Options (4G, Wi-Fi, Bluetooth)



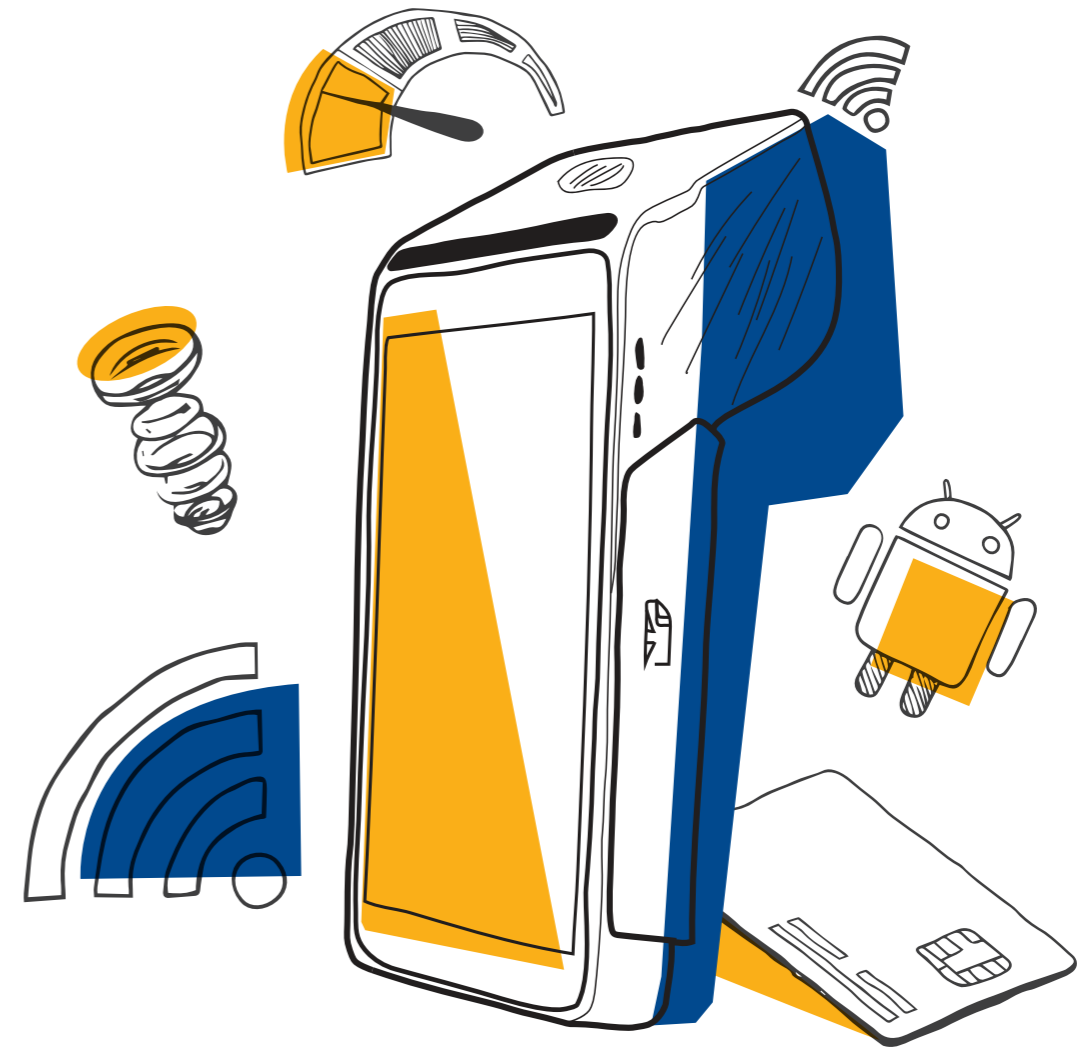
Global Location Tracking (GPS Enabled)



Various Types of Card Payment
(including Chip & PIN, Magnetic Stripe & NFC)



High-Capacity 5000mAh battery



Business Capabilities

■ High-Speed Processing

With the combination of powerful hardware and well-tuned software, this device is capable of processing payments and business tasks quickly & efficiently, which results in faster services for any business.

■ Advanced Connectivity

The device also supports high-speed 4G, Wi-Fi, Bluetooth connectivity and GPS for global location tracking. It can also handle various types of card payment, making it a versatile and flexible payment solution.

■ Latest Security Certifications

TECHNO P14 terminal is designed with security in mind. The device complies with PCI PTS 6.x

Security Standard, ensuring that all transactions are secure and protected against fraud and other types of cybercrime.

■ Long-Lasting Battery

The device comes with a 5000mAh battery which can power the terminal for more than 1500 transactions. Even for a high-transaction store, this battery can live for up to 3 days of transactions.

■ Complete User-Experience

Capability of this device in running Android business applications combined with barcode reader camera, portability and multiple payment options, makes this device a unique addition to any business, handling all the business-related tasks on its own.

